

Full Catalog

Operational Solutions
Personal Accessories
Cadmium Free Batteries
SmartChargers



 Wireless Pacific

RDX3588™
Rapid Deployment



NXDN™

Lightweight / Weatherproof
Internal 24hr Li-Ion Battery



Compact Suitcase Repeater

25/12.5/6.25kHz Digital
25/12.5kHz Analog



RAPID DEPLOYMENT REPEATER

Our law enforcement, emergency service and other key mission critical personnel need radio communications solutions that deliver premium levels of performance with absolute quality. Systems that can be redeployed instantly on demand and made fully operational, regardless of the changing environmental landscape or circumstance.

The RDX3588 Compact is designed to allow instant deployment in most radio network types. A mode selector allows you to pre-define up to 99 configurations to meet your local and interoperability needs. The 18AH inbuilt battery provides up to 24 hour standalone operation and can be re-charged by any available 10-30VDC power source or alternatively AC mains power. An optional external interface port allows the station to be configured for Command Post operation with local priority. RF output power is set to 5 watts typically to optimise battery life as well as to ensure balanced talk-in / talk-out to field portable units.

The **P25 RDX3588** communicates in either clear analog or digital and can optionally be set up to provide P25 code transparent and/or DES-OFB or AES digital encryptions.

The **TETRA™ RDX3588** can be configured to provide gateway and/or DMO repeater operation. In gateway mode it forms a bridge between the trunked Tetra network and individual portable radios, giving improved access to the network in areas of poor reception. In DMO repeater mode it acts as a powerful off-network repeater base station between the portable radios.

The **NXDN™ RDX3588** can be configured to provide analog 25/12.5kHz or digital 25/12.5/6.25kHz repeater operation. The unit can receive both analog and digital signals on a single channel repeating in whatever mode is received. Traditional community repeater operation can be achieved using its multiple (16) CTCSS and DTCS as well as digital RAN (Radio Access Number) decode functionality.

General specifications

Input AC voltage:	110-240V 50/60Hz
Input DC voltage:	10-30VDC
Suitcase colours:	Black or Yellow
Duplexer bandwidth:	300/500kHz max
Internal duplexer:	1.5dB max loss (1dB typical)
Duty cycle:	Continuous rated
Internal battery life:	24hrs @ 20% Tx duty cycle
Capacity: (ambient 68F/20C)	18AH
Tx current:	2600mA (5W)
Stand-by current:	400mA
Operating temp.:	-10°C to +60°C (RF -30°C to +60°C)
Standard weight:	<10kg
Dimensions:	40.6 x 33 x 17.4cm

P25 specifications

User modes:	99 Selectable
Frequency sub-bands:	136-174, 380-400, 400-480, 440-520MHz
Channel spacing:	12.5/25/30kHz
Frequency stability:	2ppm
RF power output:	5/2/1W programmable
FM hum & noise:	>40dB (12.5kHz) / >45dB (25kHz)
Spurious emissions:	<0.25µW <1GHz
Sensitivity:	-117dBm for 12dB SINAD
P25 sens.(5% BER):	-116dBm
Intermodulation:	>65dB (ETS method)
Selectivity:	25kHz >73dB / 12.5kHz >65dB
Spurious responses:	70dB (ETS)

NXDN specifications

User modes:	32 selectable
Frequency sub-bands:	136-174, 403-470, 450-520MHz
Channel spacing:	6.25/12.5/25kHz
	7.5/15.0/30kHz
Frequency stability:	0.5ppm
RF power output:	5W
FM hum & noise:	>45dB (12.5kHz) / >50dB (25kHz)
Spurious emissions:	<0.25µW <1GHz
Sensitivity:	-117dBm for 12dB SINAD
Digital sens.(5% BER):	-118dBm (typical)
Intermodulation:	>78dB
Spurious responses:	90dB

TETRA specifications

User modes:	99 Selectable
Frequency sub-bands:	368-400, 400-433, 440-473, 806-870MHz
RF power output:	10/3/1W programmable
Gateway services:	<ul style="list-style-type: none"> • Group voice calls from DMO to TMO • Group voice calls from TMO to DMO • Emergency group call from DMO to TMO • Emergency group call from TMO to DMO
Multi-Algorithm support for AES, IDEA and UK specific algorithms	
Air Interface Encryption TEA1, TEA2, TEA3, TEA4 supported	

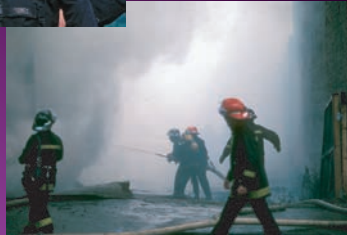
All trademarks are the property of their respective owners. Specifications are for general reference only and are subject to change without notification.

ENGINEERED TO EXACTING STANDARDS

PROFESSIONAL GRADE

 Wireless Pacific

RDX PICO™
Rapid Deployment



Analog
 Digital



Miniature Suitcase Repeater

MINIATURE SUITCASE REPEATER

<4.5kg (10lbs) - 0.008m² (0.29ft²)



MODEL I



MODEL II



MODEL III

Portables not included - shown for comparative purposes

Instant Communications

In today's world, we all know timing is everything. The RDX PICO allows you to set up a repeater communications network, almost anywhere, in a flash. Their ultralight ergonomic design means it can be deployed by any one of your staff. Fully self contained, you need only connect an external antenna, press the ON button and you're on-air... It's that easy.

User Interface

Pico is designed for the non-technical user in mind. A simple press ON button with LED backlighting lets you know it is active. Additionally, the Model II & III provide flashing indication of "low battery condition" so you know when to seek an external power source, as well as a toggle mode selector and bi-colour LED display to show the units stand-by/repeat status.

Mode Select (models II & III)

Allow you to select pre-programmed configurations such as operational frequency, 12.5/25kHz bandwidth, high/low power, or CTCSS selection to meet you specific operational needs.

Internal Power

Pico is designed to operate from its internal battery. Models II & III feature a cutting edge Li-Ion battery management system (BMS) that provides for all day operation. The BMS can connect to any available 10-30VDC @>25W power source, or mains AC power for re-charging or longer deployments. The Model I features a conventional fully sealed lead acid gel battery with AC operation/charging.

Clear or Encrypted

All PICO repeaters can communicate in clear analog. The P25 Digital Model III can also pass DES-OFB or AES encrypted transmissions **transparently**. Designed for mission critical professionals, make it part of your rapid response inventory today.

... when it must work!

Specifications:

Frequency sub-bands:	136-174, 400-480, 440-520MHz
Channel Spacing:	12.5/25/30kHz
Operating Temp.:	-10°C to +60°C (RF -30°C to +60°C)
Frequency Stability:	2ppm
Tx Current:	2800mA @5W
Stand-by Current:	380mA
Input AC Voltage:	90-260V AC 47-63Hz
Input DC Voltage:	10-30V DC >25W (Models II/III only)
RF Power Output:	1-5W programmable (Antenna port)
Duty Cycle:	5 W Continuous
Duplexer Bandwidth:	500kHz max (Max Tx/Rx/Rx)
Duplexer Loss:	1.5dB max loss (1dB typical)
FM Hum & Noise:	>40dB (12.5kHz) / >45dB (25kHz)
Spurious Emissions:	<0.25µW <1GHz
Sensitivity:	0.3uV for 12dB SINAD
P25 Sens. (5% BER):	-116dBm (Model III only)
Intermodulation:	>65dB (ETS Method)
Selectivity:	25kHz >73dB / 12.5kHz > 65dB
Spurious Responses:	70dB (ETS)
Dimensions:	27.0 x 24.6 x 12.4 cm (10.62" x 9.68" x 4.87")
Model I Battery Life:	>6 hrs @ 5% 5W Tx duty cycle
Capacity (ambient 68F/20C)	3.3AH Gel Lead Acid
Model II/III Battery Life:	>12 hrs @ 10% 5W Tx duty cycle
Capacity (ambient 68F/20C)	8.8AH Li-Ion
Standard Weight:	<4.5Kg (10 lb)
Type Acceptance:	FCC, ETS300,Aust/NZ

FEATURE MATRIX

PICO Model	I	II	III
P25 Transparent digital repeat			✓
Analog repeat	✓	✓	✓
8.8AH Li-Ion battery		✓	✓
3.3AH Gel lead acid battery	✓		
10-30V DC charging input		✓	✓
Universal AC input	✓	✓	✓
Transmit / standby indicator		✓	✓
Battery status indicator		✓	✓
Channel / mode	1	2	3
Black housing			✓
Yellow housing		✓	
Silver housing	✓		

RDX FAMILY - SIZE COMPARISON



Pico Compact Advanced

WP Logo & RDX, RDX Pico are trademarks of Wireless Pacific Ltd. All others are those of their respective owners. Specifications subject to change due to product enhancements without notice.

PROFESSIONAL GRADE

ENGINEERED TO EXACTING STANDARDS

BDX5000™



BASE DEPLOYMENT X-PONDER

19" rackmount P25 repeater

The BDX5000 design allows simplified integration into most radio networks. A 99 mode selector allows you to pre-define a variety of configurations to meet your system operational needs.

The BDX5000 communicates in clear analog or digital and can optionally be configured to provide P25 **Code Transparent** and/or DES-OFB digital encryptions.

Besides standalone analog/P25 repeater operation, the BDX5000 with **NetConnect** option allows wireless linking into an overlapping fixed network. This expanded interoperability capability allows you to use the BDX as an RF gateway to tie together users on separate radios networks, or to link multiple sites together to provide a wider coverage area.

Additionally, the BDX features a remote speaker microphone port for local control or site testing along with remote status indication. To further enhance communications reliability, the unit can be configured with 18AH internal Li-Ion battery to ensure continued communications in the event of an extended power blackout.

Specifications:

Frequency sub-bands:	136-174, 380-400, 400-480, 440-520MHz
Channel Spacing:	12.5/25/30kHz
User Modes:	99 Selectable
Frequency Stability:	2ppm
RF Power Output:	25 /5/1W programmable
Duty Cycle:	5W Continuous / 25W intermittent
Optional Link RF O/P :	5 /1 Watt programmable
Tx current:	2600mA:5W/25W: 5A (Link add~2A)
Stand-by current:	400mA (Link add ~180mA)
Internal Duplexer:	1.5dB max loss (1dB typical)
Operating Temp.:	-10°C to +60°C (RF -30°C to +60°C)
Input DC Voltage:	13.8V DC/ 28VDC optional
Duplexer bandwidth:	500kHz max
FM Hum &Noise:	>40dB (12.5kHz) / >45dB (25kHz)
Spurious Emissions:	<0.25µW <1GHz
Sensitivity:	0.3uV for 12dB SINAD
P25 Sens.(5% BER):	-116dBm
Intermodulation:	>65dB (ETS Method)
Selectivity:	25kHz >73dB / 12.5kHz > 65dB
Standard Weight:	10kg
Dimensions:	48 x 30 x 9cm
Internal battery Life:	12hrs @ 20% 25W Tx duty cycle
Capacity(ambient 68F/20C)	18AH (optional)
Spurious Responses:	70dB (ETS)
Type Acceptance:	FCC, ETS300, Aust/NZ

MODEL:

BDX5000

DESCRIPTION:

99 mode 25W P25
13.8V DC operation

OPTIONS:

xV0	140-148MHz band operation
xV1	148-160MHz band operation
xV2	150-166MHz band operation
xV3	152-174MHz band operation
xU0	380-400MHz band operation
xU1	403-420MHz band operation
xU2	420-440MHz band operation
xU3	450-470MHz band operation
xU4	470-500MHz band operation
xU5	500-520MHz band operation
X801	Add internal 18AH back-up battery/10-30VDC input
X802	Alternate 28VDC operation -not compatible with X801
X810	Mixed mode operation - not compatible with X820-822
X820	Link option -adds link radio
X822	P25 encrypted link option - adds P25 with DES-OFB link radio
X860	Omit Duplexor -adds N conn. - Not compatible with X820-833
X872	External audio interface
X876	Remote control interface
X888	DES-OFB Encrypt. enc/dec
X891	Secure P25 transparent
X900	Simplex/Duplex ant. port switch - not compatible with X820-822
X901	Custom duplexer
X903	Dual RDX cross connect

ACCESSORIES:

S210	Command post RSM
S211	BDX programming cable

specifications subject to change without notice





PORTABLE DEPLOYMENT X-PONDER

The PDX3522 is designed to provide simple low power P25 digital repeater operation. Two modes are internally selectable allowing pre-defined configurations to meet your local operational needs.

The unit communicates in clear analog or digital and can optionally be configured to provide **P25 code transparent operation**. (Code specific repeater operation is available by special order.)

It's small compact design means it is ideal for use as an in-vehicular mobile repeater for tactical response applications, or can be easily mounted on a wall or a pole for localised operation. An optional 3.3A internal battery provides operation during power outages. It can, of course, be powered by solar/wind power installations in remote applications.

Specifications:

Frequency sub-bands: 136-174, 400-480, 440-520MHz
 Channel Spacing: 12.5/25/30kHz
 User Modes: 2 modes internally selectable
 Frequency Stability: 2ppm
 RF Power Output: 5/1W programmable
 Duty Cycle: 5W continuous
 Optional Link RF O/P : 5 /1 Watt programmable
 Tx current: 2600mA: 5W
 Stand-by current: 400mA
 Internal duplexer: 1.5dB max loss (1dB typical)
 Operating Temp.: -10°C to +60°C (RF -30°C to +60°C)
 Input DC Voltage: 13.8V DC
 Duplexer bandwidth: 300kHz max
 FM hum & noise: >40dB (12.5kHz) / >45dB (25kHz)
 Spurious emissions: <0.25µW <1GHz
 Sensitivity: 0.3µV for 12dB SINAD
 P25 Sens.(5% BER): -116dBm
 Intermodulation: >65dB (ETS Method)
 Selectivity: 25kHz >73dB / 12.5kHz > 65dB
 Standard weight: 4kg
 Dimensions: 32 x 23 x 11cm
 RF connector: TNC female
 Spurious responses: 70dB (ETS)
 Type Acceptance: FCC, ETS300, Aust/NZ

PDX3522™

POLE/WALL/MOBILE REPEATERS

MODEL:

PDX3522

DESCRIPTION:

1 mode 5W P25/ analog
 with 3.3AH internal gel lead
 acid battery

OPTIONS:

xV1 148-160MHz band operation
 xV2 150-166MHz band operation
 xV3 152-174MHz band operation
 xU1 403-420MHz band operation
 xU2 420-440MHz band operation
 xU3 450-470MHz band operation
 xU4 470-500MHz band operation
 xU5 500-520MHz band operation
 x803 Internal 3.3AH back-up
 x876 Remote control interface
 x888 DES-OFB encryption
 x891 P25 transparent operation

ACCESSORIES:

A112 4M tripod mast,
 -with guys, collinear antenna, RG58 low
 loss cable and black carry bag

A112M Pole mount bracket

S211 PDX programming cable

 Wireless Pacific

LONE ALERTTM



...WPLA SERIES



LONE ALERT™

'Mandown' Remote Speaker Microphone

Designed to provide your lone worker with a "guardian angel" should they fall, suffer a medical mishap or be attacked; our Lone Alert Remote Speaker Microphones help provide a safer and more secure working environment.

How it works:

A microcontroller constantly monitors the position of the user. Should the Lone Alert Mic stay in a position of greater than 60° off upright for longer than 15 seconds, a low-level warning will sound for 10 seconds. Lone Alert will then cause the radio to send a warbling alarm tone over the radio channel or trunked talkgroup followed by 15 seconds of 'Live Mic' so others on the radio channel can monitor the situation. This process will repeat every 2 minutes until the Lone Alert RSM is held upright or the attached radio is turned off.



FEATURES

- Trunked or conventional operation
- 10 sec warning pre-alert tone
- Non-mercury (non-toxic) sensor
- Low current consumption
- 3.5mm earpiece socket
- IP54 weatherproof
- 15 second "Live Mic"



PROFESSIONAL GRADE

 Wireless Pacific

PREMIUM REMOTE SPEAKER MICROPHONE



...WPNCM SERIES

PREMIUM NOISE CANCELLING RSM

Designed for law enforcement and other mission critical users, our rugged Premium Noise Cancelling Remote Speaker Microphones deliver outstanding clear audio in all situations. Built to meet IP54 weatherproof compliance, they withstand driving rain and are especially drop resistant providing year-in-year-out dependability. Naturally, the unit includes a top mounted 3.5mm earpiece jack to aid in maintaining communications confidentiality. Order an earpiece, if required, that best suits your needs.

FEATURES

- Drop resilient
- IP54 weatherproof case
- Premium quality connector
- Ruggedised 360° rotary clip
- Tough 5mm plug-in curly cable
- Top mounted 3.5mm earpiece socket



PROFESSIONAL GRADE

ENGINEERED TO EXACTING STANDARDS

 Wireless Pacific

REMOTE SPEAKER MICROPHONE

↑ Hoyts
↑ Borders
↑ Target
↑ Lift
→ Toys 'R' Us
→ Lower Food Court
→ Restrooms



...WPRSM SERIES

COMPACT REMOTE SPEAKER MICROPHONE

Our rugged yet highly compact Remote Speaker Microphones deliver outstanding clear audio and are built to withstand driving rain and are naturally drop resilient. Ideal for all traditional two way radio professional use applications, they include a 3.5mm earpiece jack to allow connection of earpieces for even great flexibility and privacy when needed.

Delivering clean crisp audio everytime, you'll enjoy the higher standard of comfort and performance that comes from a dedicated precision audio accessory manufacturer.



FEATURES

- 3.5mm earpiece socket
- Water resistant housing
- 8 position 360° rotary clip
- Resilient retractable cables
- Premium quality connectors



ENGINEERED TO EXACTING STANDARDS

 Wireless Pacific

ITROQTM

Ear Microphone

FROM THE INVENTORS OF
THE INDUSTRY STANDARD "JAC"

i
T
R
Q
Innovative
Tough
Reliable
Quality

Whisper clear audio
Patented *twist & lock*TM connectivity

INTRODUCING



Wireless Pacific

...answers

iTRQ™

FROM THE INVENTORS OF THE INDUSTRY STANDARD "JAC"

Wireless Pacific's totally new iTRQ features super enhanced cords allowing you to leave the **whisper clear** microphone harness attached to the radio and to simply swap earpieces when users change shifts. The patented **twist and lock** 2.5mm earpiece connection eliminates wear on the radio, hence reducing radio repairs. Personal issue of earpieces is good for hygiene and increased accountability. Save money! Buy one "iTRQ" per radio then choose from a huge variety of inexpensive comfortable earpieces for every staff member. Don't need an earpiece all the time? Use the WPSPK-TL loudspeaker for those times when everyone in the room needs to hear the conversation. Privacy or broadcast ..you choose what's best for the situation. When you need to talk you can count on iTRQ.

Model No:

WP iTRQ

IP54 weatherproof
patented **twist & lock**™ connectivity
super enhanced cords
whisper clear audio

best value
best OH&S solution
best ever Ear Microphone
Call now!



twist
&
lock



EARPIECES

2.5mm **TL** Series



WPBEB-TL



WPCEH-TL



WPBEH-TL



WPEH-TL



WPTEH-TL



WPSPK-TL
(Loudspeaker)

EARPIECE RECEIVERS

Comfort Always™

Now Wireless Pacific bring you even more choice. Our expanded range of plug-in earpieces deliver exceptional performance and are available in 2.5mm twist & lock, 3.5mm standard fit, or 3.5mm threaded "V" series versions. Economically priced they keep personal issue costs down while keeping workplace hygiene and employee morale high (whilst ensuring your OH&S duty of care imperatives).

Made to be comfortably worn all day long - the high comfort design means they'll feel like they melt away within moments of fitting. Accessories that deliver feel good, crystal clear audio, yet are priced so you can choose what best suits your operational needs without compromising your budget.

Audio never felt this good!

FEATURES

Feel good polymers

Clear crisp audio

Resilient curly cables

Premium quality connectors



WPTEP



WPSPK



WPTEH



WPEB



WPCEH
(WPRSMEP)



WPBEH
(WPRSMEPB)



WPEH

ENGINEERED TO EXACTING STANDARDS

 Wireless Pacific

EARHOOK MICROPHONE



...WPEAR SERIES

EARHOOK MICROPHONE

Comfort Always™

Create the professional image you want with these feel good 2 piece earhook microphones. Now with enhanced weather resistant housing and rugged cables, they are designed to deliver premium communications day-in-day-out. The ultra comfortable translucent earhook connects directly to the microphone by a 45cm straight cable for uncluttered use.

The stylish compact microphone includes a sure touch PTT button that delivers a smooth tactile feel so you know your message is being heard. The new WPEAR delivers crystal clear audio and are priced to meet your communications needs while, allowing personal issue to maintain premium hygiene for your employees.

Enjoy the benefits that come from a dedicated accessory manufacturer!

PROFESSIONAL GRADE



FEATURES

- IP54 weatherproof
- All in one design
- 45cm straight earpiece cord
- Crystal clear audio
- Ideal for personal issue

ENGINEERED TO EXACTING STANDARDS

 Wireless Pacific

EARBONE MICROPHONE



...WPEBM SERIES

EARBONE MICROPHONE

Comfort Always™

Designed for extreme high noise environments, these industrial use earbone microphones allow you to not only hear but talk via vibrations through your ear canal and as such pick up negligible background noise. They are ideal for use with earmuffs or even breathing apparatus. The integrated earpiece/microphone design provides discrete, high intelligibility communications for covert applications.

PROFESSIONAL GRADE

Microphone / Earpiece
(Beige model shown)



FEATURES

- Drop resilient
- Water resistant case
- Premium quality connector
- Rugged 360° rotary clip
- Robust curly cable
- No background noise

ENGINEERED TO EXACTING STANDARDS

 Wireless Pacific

Smart Headsets WPSHD

Extreme Noise
High Noise

Dual PTT
Volume Adjust



Heavy Duty Headset

WPSHD

Smart Headsets

Our noise cancelling **Smart Heavy Duty** headsets provide excellent transmission quality in extreme or high noise environments so your messages come through loud and clear every time. Designed for use with or without a safety helmet, the dual muff design also provides clear reception in almost all work environments by blocking out high levels of background noise from the users ears. The large in-line heavy duty PTT button with belt clip plus ear cup PTT help ensure ease of communications in even the most demanding of industrial applications.

More extreme high noise environments

Order the **WPDHM** Extreme noise dynamic mic option with 24dB NRR and you'll be heard loud and clear even standing near race cars or standing by blaring PA sound systems.

Note: The standard noise cancelling model should be positioned **about 3-4cm** from your lips. The extreme noise cancelling microphone needs to be **within 1cm** for correct operation.

Secondary external input

Each headset features a 3.5mm external audio input allowing connection of a cellphone or even an MP3 player to be heard alongside your radio channel traffic.

WPWPTT - Wireless PTT option

The Wireless PTT function allows you to velcro the PTT button wherever most convenient - your finger, steering wheel, etc. It is ideal for applications where it is essential that the user's hands remain on the controls of equipment.

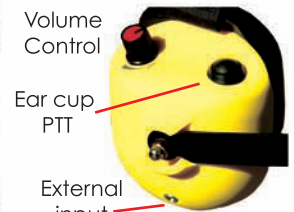
Ideally suited for:

Event management
Motor racing
Manufacturing
Construction
Airport / Waterfront



Features:

Directional noise cancelling mic
Optional Extreme noise dynamic mic
Ear cup plus In-line PTT buttons
Comfortable dual gel muffs
Tough plug-in curly cords
Ear cup volume control
External audio input
Optional Wireless PTT
Optional Carry bag



Wireless Pacific brings you a stunning range of professional audio accessories that deliver exceptional performance, no matter what industry you serve. Accessories that are made to be worn comfortably all day long. Enjoy the benefits that comes from a dedicated audio accessory manufacturer.

**IN-LINE
PTT**



WPWPTT

(optional)
Wireless
PTT



WPHCB

(optional)
Carry
Bag



WPMDH SERIES MEDIUM DUTY HEADSET



Our medium duty headset provides excellent transmission quality and reduces background noise so your messages come through loud and clear every time. The flexible design allows for easy adjustment to ensure all shift-long comfortable wear.

WPMAD SERIES LIGHTWEIGHT HEADSET

Our ultralight headset provides excellent transmission quality and reduces background noise so your message comes through loud and clear every time. Designed for all day wear, they provide discreet communications in all work environments.



Featuring finger "ring" PTT

WPSHS SERIES SINGLESIDE HEADSET



Our ultralight singleside headset provides excellent transmission quality and minimal background noise, so your message comes through loud and clear every time. Designed for all day wear, they provide clearer communications in all work environments.

SPECIAL ORDER

These items are available by special order only. Note: minimum quantity purchases may apply. Please call for pricing and availability.

WPSAC SERIES ADVANCED EAR MICROPHONE

Our Advanced Ear Mic is designed for law enforcement and mission critical users. Highly weatherproof, it delivers outstanding audio in a rugged high impact housing making it ideal for SWAT teams, railway and airport maintenance crews and all heavy duty applications where highly durable but discreet communications is required.

The WPSAC "harness" normally stays attached to the radio while personal issue earpieces can be swapped to maintain maximum hygiene and OH&S compliance. Attaching your choice of threaded 3.5mm is easy and secure yet won't break away with heavy use.

The WPSAC can optionally also be configured to allow external PTT functionality using our WPPTT (Velcro PTT) or WPRTT (Ring PTT)



WP3WS SERIES COVERT 3 WIRE KIT

Beige, discreet, Motorola Hirose interface, quick disconnect acoustic tube. ...enough said.



all trademarks are the property of their respective owners

ADAPTORS

When handing over radios from shift to shift, these versatile adaptors allow you to swap personal issue accessories efficiently. The WP series adaptors helps reduce your operational costs by allowing you to use more economical 3.5mm threaded or Hirose universal audio accessories.



WP300-328

Use GP300 2Pin accessories on GP328 etc

WPVIS-328

Use Visar/3.5mm threaded access. on GP328 etc

WPVIS-MTS

Use Visar/3.5mm threaded access. on XTS/MTS/HT etc



WPVIS-500

Use Visar/3.5mm threaded access. on GP328**PLUS** etc

WPXTS-HIR

Use 6 pin Hirose accessories on XTS/MTS/HT etc

REMOTE PTT SWITCHES



WPPTT

with Velcro strap

WPRTT

Ring style

Our two Remote PTT switches are fitted with 2.5mm plugs and can be used with our Earbone or Throat microphones.

WPSHD SPARES



WPSHD-VEL

WPSHD-MUF

WPSHD-FOAM
(INSIDE CUP)

WPSHD-MAA

WPSHD-SOC

WPSHD-MIC

PART NO:

WPSHD-MUF
WPSHD-FOAM
WPSHD-MAA
WPSHD-MIC
WPSHD-SOK
WPSHD-VEL

REPLACEMENT FOR:

Black GEL Muffs (pair)
Foam Speaker cover (pair)
Mic Arm Assembly (no Mic)
Noise Cancel. Electret Mic
Mic sock - cloth
Velcro headstrap

CURLY CABLES



PART NO:

WP50-328
WP50-500
WP50-J
WP50-140
WP50-K
WP50-i4

REPLACEMENT FOR:

WPNCM GP328/MTX960
WPNCM 328 Plus
WPNCM-XTS3000/MTX
WPNCM - Kenw. Multi pin
WPNCM - Kenw. 2 pin
WPNCM - Icom IC-41S/F43

OTHER SPARES

*Please call for other items not listed.
They may be available by special order.*

 Wireless Pacific

SmartChargers EF Batteries

Multi-Chemistry



Desktop

Wall Mount

Multi Model

Cadmium Free



AC/DC - Dual - 6 Way - 12 Way



DESKTOP - WALL MOUNT - VEHICLE

For years, professional radio users have longed for battery chargers that, not only provide the flexibility to easily migrate from one radio platform to another, but also allow them to take instant advantage of new battery technologies, without the need to always replace their chargers. Designed to meet this objective, Wireless Pacific introduces our intelligent range of multi-chemistry SmartChargers.

Each charger can be configured easily to accommodate a wide range of current two way radio models, brand and battery chemistries. Engineered to support most existing and retired portable radios we continually add new pocket compatibility with most new portable releases from leading radio manufacturers. Wireless Pacific SmartChargers are configured for the radio of your choice. Additional smart pods can be ordered, as required, for other radio-models.

SmartChargers can be powered from 110-240V AC 50/60Hz power and 13.8VDC power sources found in most vehicles. Note: To prevent a "flat" car battery, our SmartChargers automatically stop when the vehicle's voltage falls below 12.6VDC.

12 way Series provide charging for up to twelve positions for radios/batteries.

Dual Series can be configured to charge either two radios/four batteries/combination

Mobile Series provide rapid charging for a radio or battery inside a vehicle.

Choose Wireless Pacific battery chargers - Smart Always!



...WPXSC SERIES



...WPMSC SERIES



...WPMVC SERIES

...WPDSC/QSC SERIES

AC/DC - Dual - 4 Way - 6 Way - 12 Way - Mobile

SmartPacks

Li-Ion Energy Budget Packs

Our new SmartPacks give you cutting edge Li-Ion technology at great value prices. SmartPacks come complete with our revolutionary multi-chemistry SmartCharger and genuine Wireless Pacific's high capacity Li-Ion batteries. Enjoy dramatically reduced weight and size while getting extended radio operation between charges while proudly doing your bit to protect the planet (and your budget!).



ENGINEERED TO EXACTING STANDARDS

LI-ION & NI-MH BATTERIES

Wireless Pacific is proud to offer an extensive range of **cadmium free** batteries, which will allow us all do our bit to protect the planet. Our green range of Lithium Ion (Li-Ion) and Nickel Metal Hydride (Ni-MH) are not only environmentally friendly but are dramatically smaller and/or significantly lighter than all other battery technologies.

Our exclusive range of **Long Life** Ni-MH range provide up to **1000 recharge cycles - doubling** the working life. This effectively halves your ongoing operating cost when compared to most other Ni-MH batteries available.



to suit

Icom
Kenwood
Macom
Motorola
Sepura
Simoco
Tait
Vertex

Ultra-Light & More Power - Genuine Value -

Our enhanced batteries are only assembled in Taiwan and China - the OEM home to many global products from such industry leaders as; Apple, Cisco and Dell, to name but a few. We only use the freshest of premium Li-Ion cells from the world's leading cell maker Sanyo, Panasonic and Yuasa to ensure absolute electrical performance. We use ultra-reliable flex circuits where sensible and we ultrasonically weld them into a rugged, flame retardant industrial strength case. We think it's a better battery recipe!

FEATURES

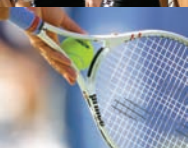
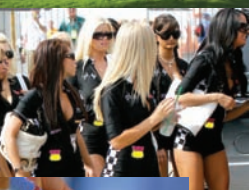
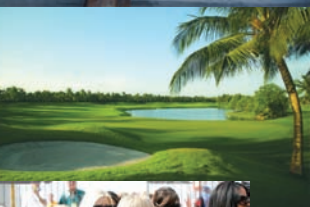
Ultra-light
High capacity
Non-toxic
Japanese cells
Great price
Longer shift life
Cadmium Free

Protect the Planet

ENGINEERED TO EXACTING STANDARDS

Prices are correct at time of printing and quoted
in Australian dollars excluding GST
Check with PWC for current validity.

Product Overview



WPL Copyright 2009

RDX3588™, RDX™, RDX Pico™, Rapid Deployment X-Ponder™, Lone Alert™, ITRQ™, Cadmium Free™, Comfort Always™ and NetConnect™ are trademarks of Wireless Pacific Limited. All other trademarks are the property of their respective owners.